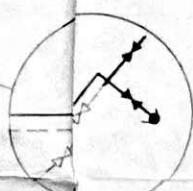
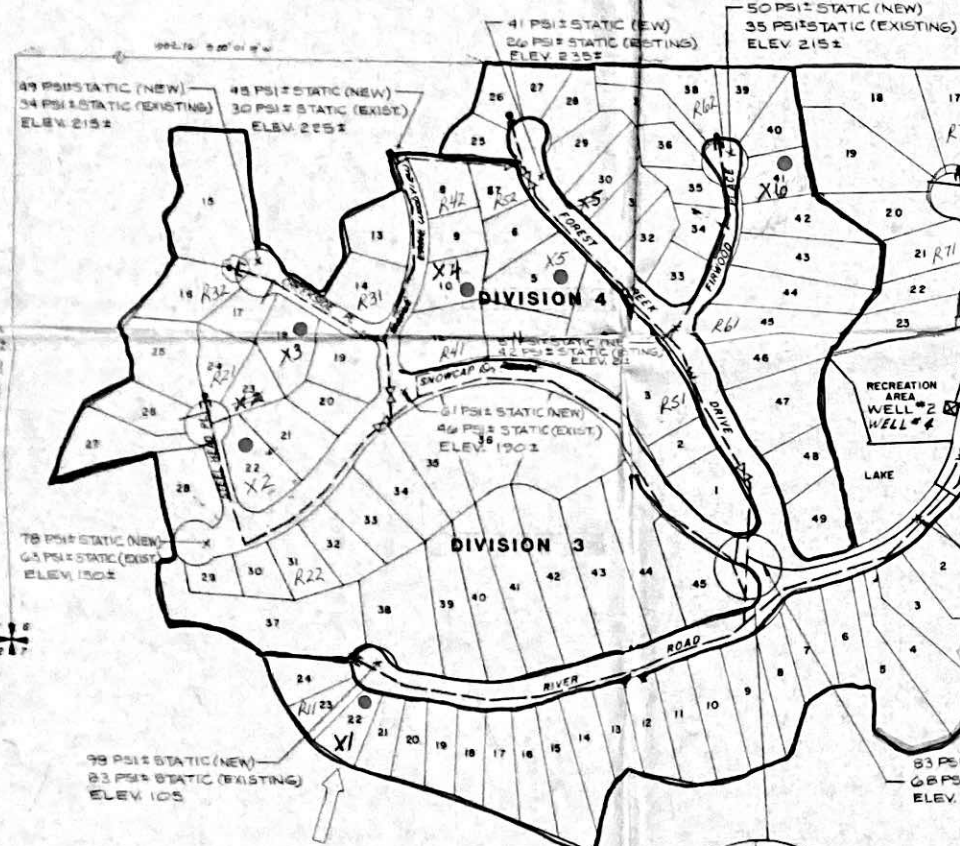
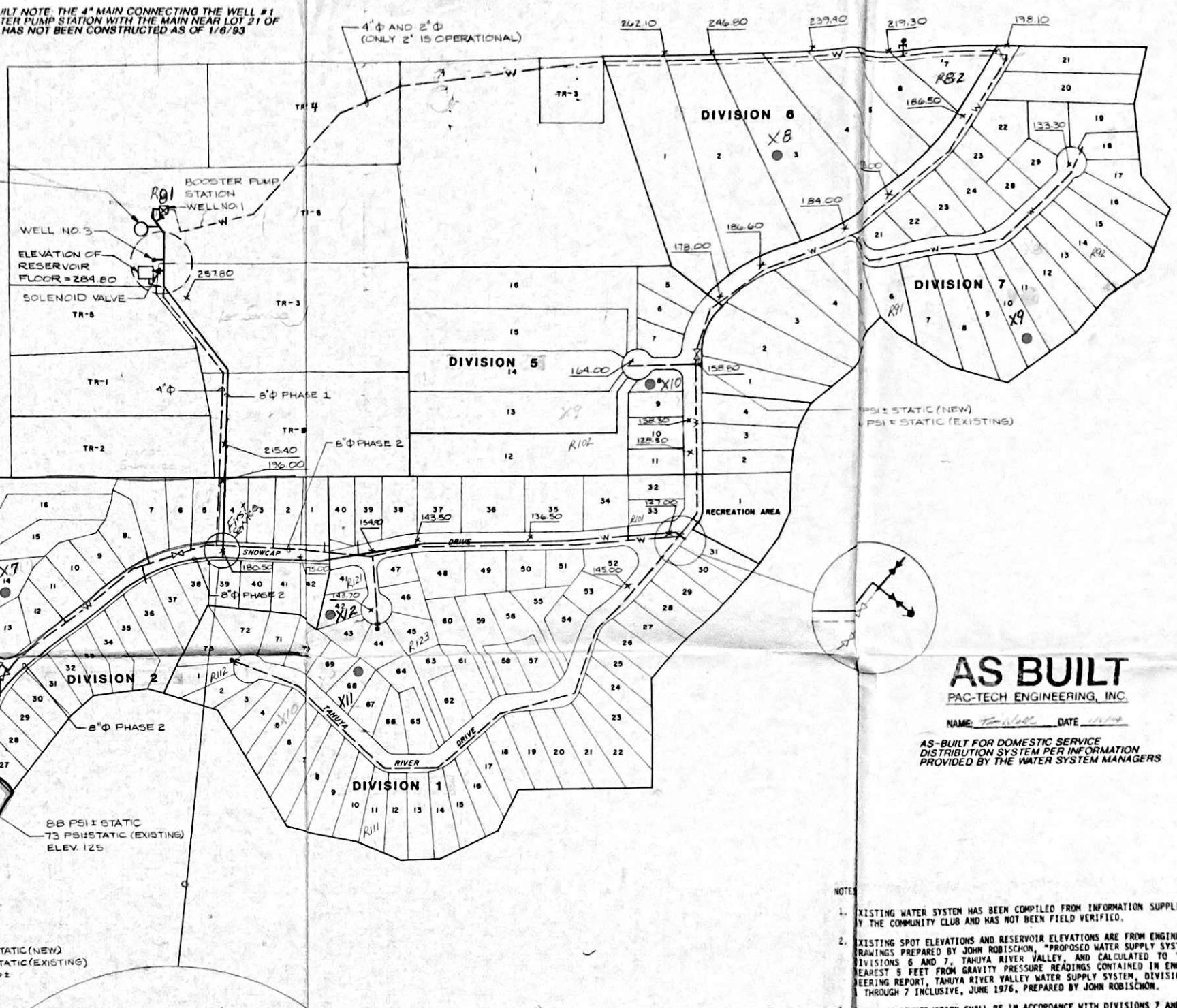


AS-BUILT NOTE: THE 4" MAIN CONNECTING THE WELL #1 BOOSTER PUMP STATION WITH THE MAIN NEAR LOT 21 OF DIV. 7 HAS NOT BEEN CONSTRUCTED AS OF 1/6/93

NEW 94,000 GALLON STORAGE TANK (20'φ x 40' HIGH, MT. BAKER SILO) BASE ELEVATION 272.0±, OVERFLOW 331± (SEE STORAGE TANK DETAIL)

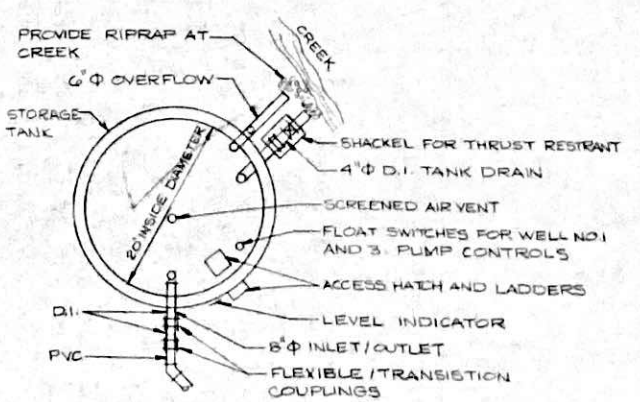
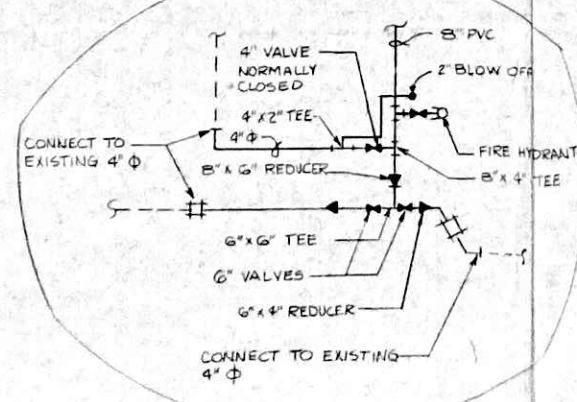


AS BUILT
PAC-TECH ENGINEERING, INC.

NAME: TANUYA RIVER VALLEY DATE: 1/1/94

AS-BUILT FOR DOMESTIC SERVICE DISTRIBUTION SYSTEM PER INFORMATION PROVIDED BY THE WATER SYSTEM MANAGERS

- NOTES
- EXISTING WATER SYSTEM HAS BEEN COMPILED FROM INFORMATION SUPPLIED BY THE COMMUNITY CLUB AND HAS NOT BEEN FIELD VERIFIED.
 - EXISTING SPOT ELEVATIONS AND RESERVOIR ELEVATIONS ARE FROM ENGINEER DRAWINGS PREPARED BY JOHN ROBISCHON, "PROPOSED WATER SUPPLY SYSTEM DIVISIONS 6 AND 7, TANUYA RIVER VALLEY, AND CALCULATED TO THE NEAREST 5 FEET FROM GRAVITY PRESSURE READINGS CONTAINED IN ENGINEERING REPORT, TANUYA RIVER VALLEY WATER SUPPLY SYSTEM, DIVISIONS 1 THROUGH 7 INCLUSIVE, JUNE 1976, PREPARED BY JOHN ROBISCHON.
 - PIPELINE CONSTRUCTION SHALL BE IN ACCORDANCE WITH DIVISIONS 7 AND 9 AND STANDARD PLANS, 1984 STANDARD SPECIFICATIONS FOR ROAD, BRIDGE AND MUNICIPAL CONSTRUCTION, WSDOT/APMA.
 - PIPE MATERIAL FOR PVC PIPE SHALL BE PRESSURE CLASS 200 ASTM D2241.
 - BLOWOFF ASSEMBLIES SHALL BE INSTALLED AT ALL LOW POINTS.
 - HAND AIR RELEASE VALVES SHALL BE INSTALLED AT ALL HIGH POINTS.
 - PRESSURE TESTING AND DISINFECTION OF MAINS SHALL BE IN ACCORDANCE WITH DIVISION 7 OF THE ABOVE REFERENCED SPECIFICATION.
 - STORAGE TANK CONSTRUCTION, TESTING AND DISINFECTION SHALL BE THE STANDARDS OF MT. BAKER SILO, INC.



STORAGE TANK DETAIL (94,000 GALLON)

DESIGN	SC1	DATE	BY
DRAWN	DSJ/FW	REVISION	DESCRIPTION
CHECKED	JW	REV. NO.	
SEC.	T		
FIELD BK.	N		
DATE	12/1/84		
SCALE	1" = 200'		

TITLE: TANUYA RIVER VALLEY WATER SYSTEM STORAGE AND WATER MAIN IMPROVEMENTS

CLIENT: TANUYA RIVER VALLEY COMMUNITY CLUB, BELFAIR, WASHINGTON

DATE SEALED: 2-21-84

PAC-TECH ENGINEERING, INC.
615 SOUTH 9TH STREET, SUITE 201
TACOMA, WASHINGTON 98405 (206) 835-4451
8781 STEEPLAND WAY, SUITE 4
BREMERTON, WASHINGTON 98512 (206) 837-7022
SEATTLE 206-835-8700

SHEET 1 OF 1
JOB NO. 1822